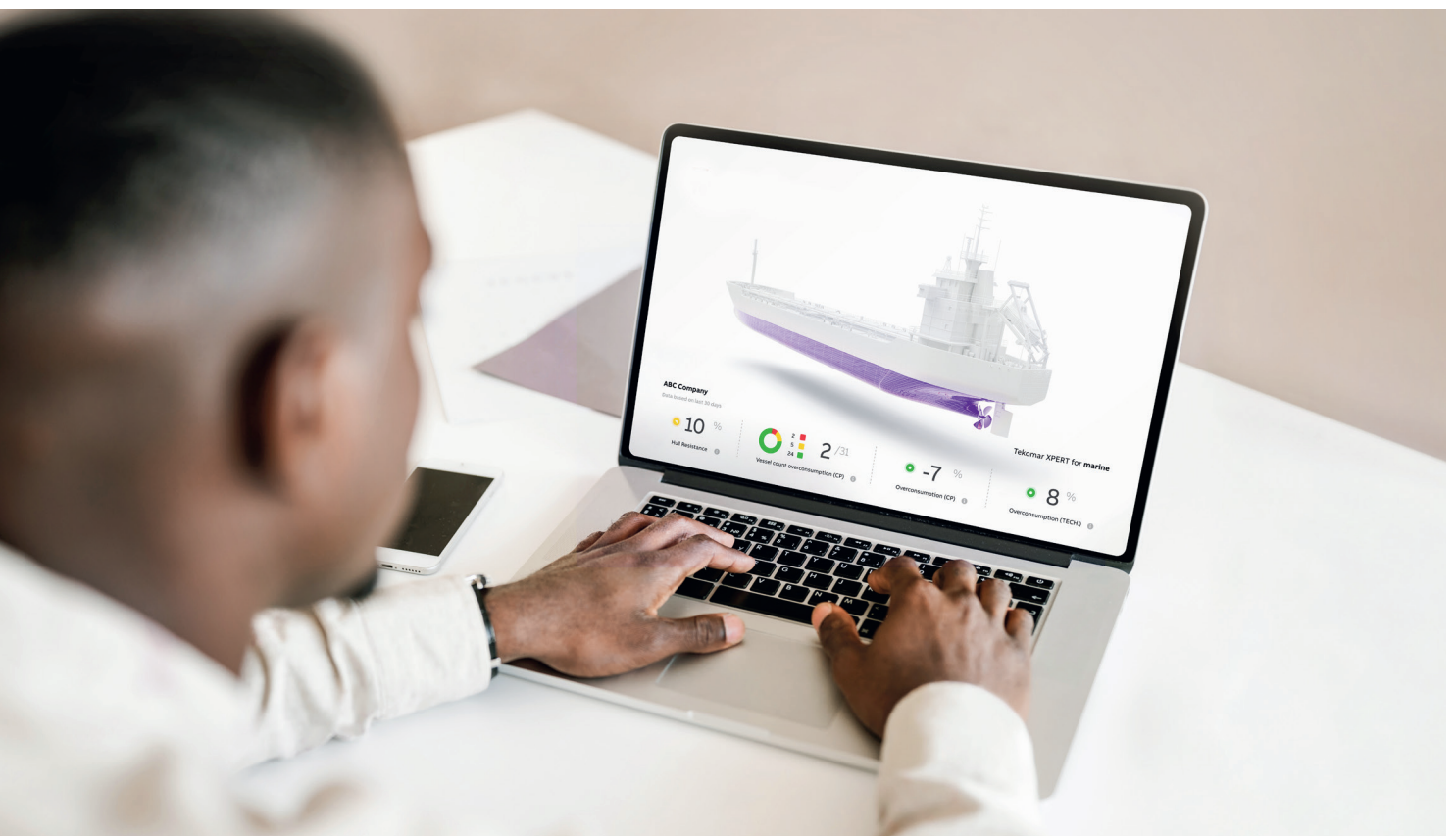


Efficiency. In your hands.

Tekomar XPERT marine Hull & Propeller Module



The Hull & Propeller module is a part of Accelleron's Tekomar XPERT marine all-in-one, digital solution for the marine industry.

This is more than just data. It provides critical insights into the condition of a vessel's hull and propeller and its effect on an engine's propulsion efficiency. This information makes it easy to reduce overconsumption and, most importantly, CO₂ emissions.

Get a complete picture of the hull and propeller condition across your fleet.

In a nutshell:

The Hull & Propeller module focuses on the following key areas to support shipowners and operators in improving their propulsion efficiency.



Fouling assessment:

Assesses the condition of your hull and propeller and determines the need and optimal timing for cleaning events.



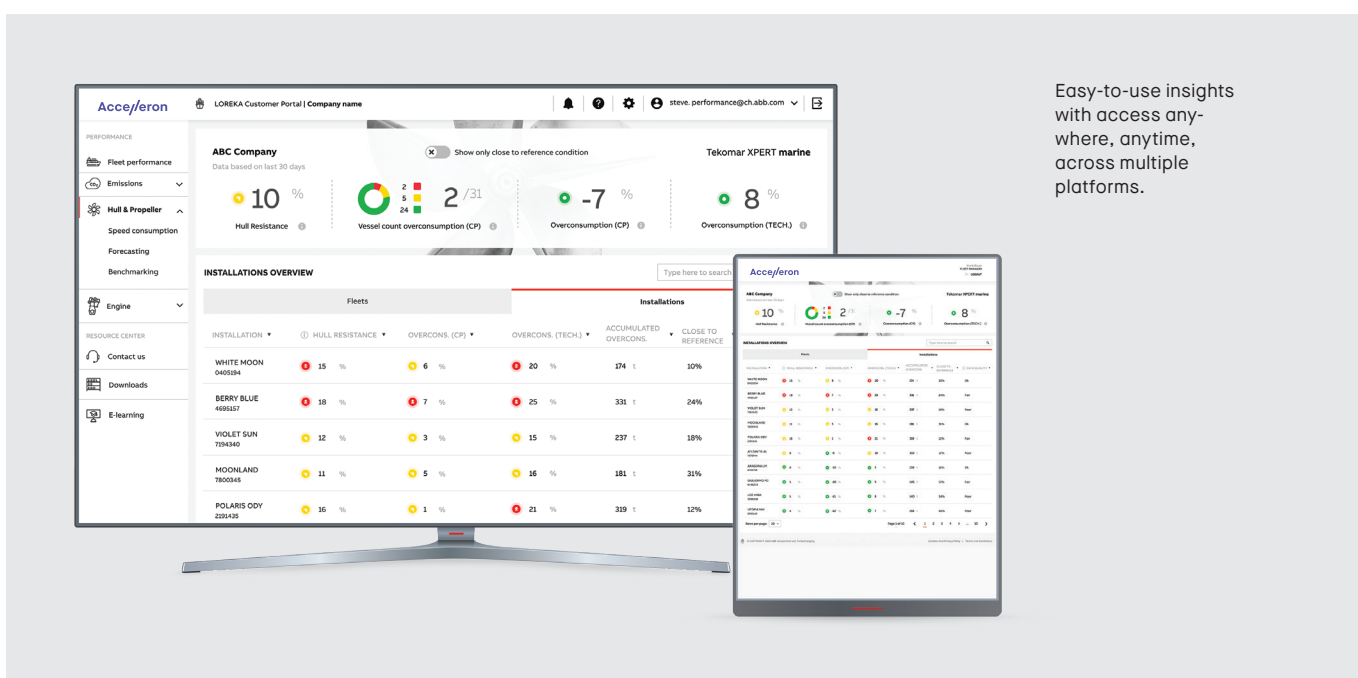
Charter cooperation:

Provides transparency on compliance with charter party agreements.



Overconsumption guidance:

Identify the root causes of overconsumption and the effectiveness of corrective actions.



Easy-to-use insights with access anywhere, anytime, across multiple platforms.

Key highlights of the Hull & Propeller Module:

- Determines overconsumption due to fouling compared to technical and charter party reference.
- Hull cleaning advisory based on input parameters such as hull cleaning cost, fuel cost and speed.
- Speed vs consumption curves for charter party reference.
- All measurements corrected to reference conditions and elimination of external influencing factors according to ITTC rules.
- Benchmarking on company, fleet and vessel level.